

# Willow



elevation A



elevation B



elevation C

**ROCKLYN HOMES**

The Most Important Home We'll Build Is Yours



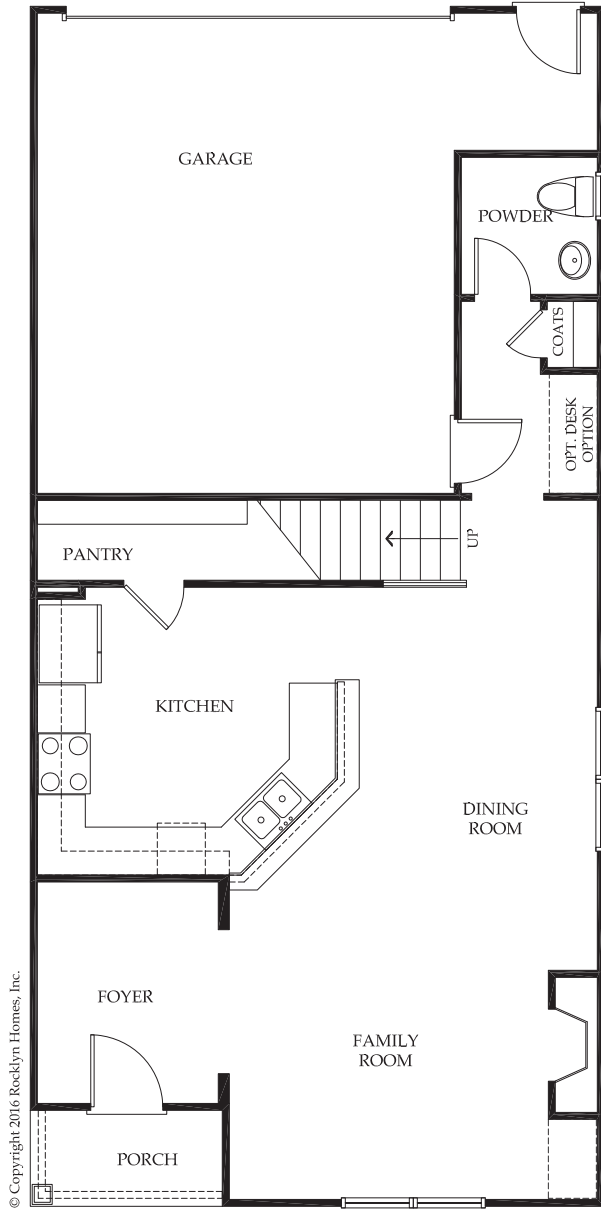
For illustrative purposes only. Actual construction may vary as circumstances dictate. Builder reserves the right to change or delete features at any time. Materials or items shown as "optional" may be selected at additional cost.



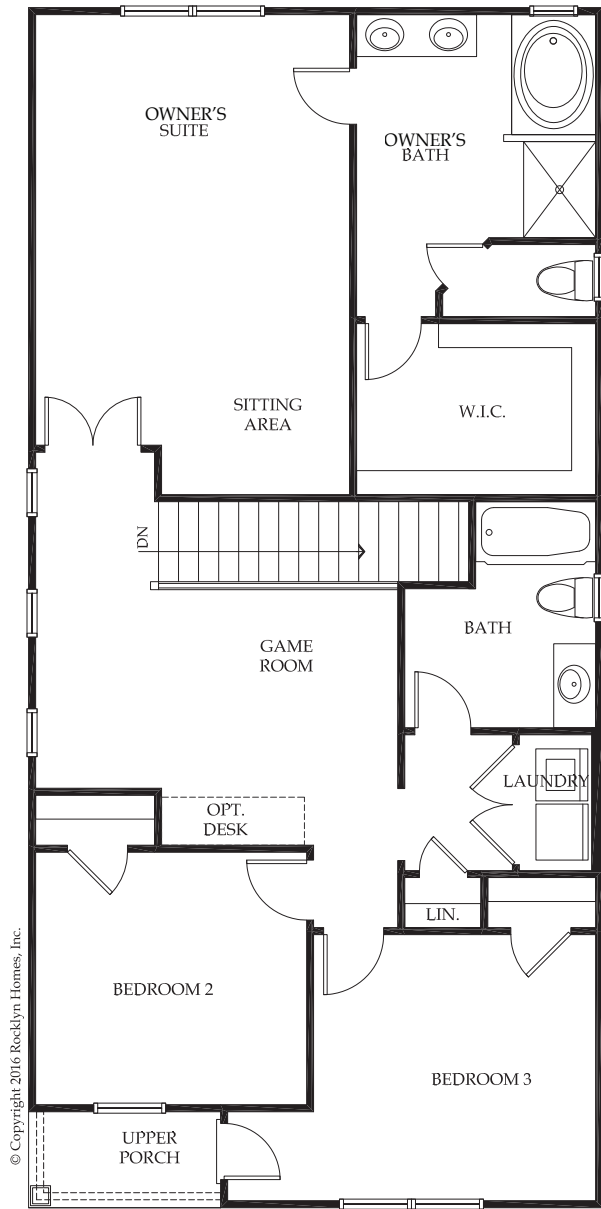
07/01/16

# Willow

3 Bedrooms, 2.5 Baths  
± 1,875 S.F.



First Floor



Second Floor



For illustrative purposes only. Actual construction may vary as circumstances dictate. Builder reserves the right to change or delete features at any time. Materials or items shown as "optional" may be selected at additional cost.

